



COOKIE®
ABSORBENT PANEL

CONVEX SHAPE



CONCAVE SHAPE

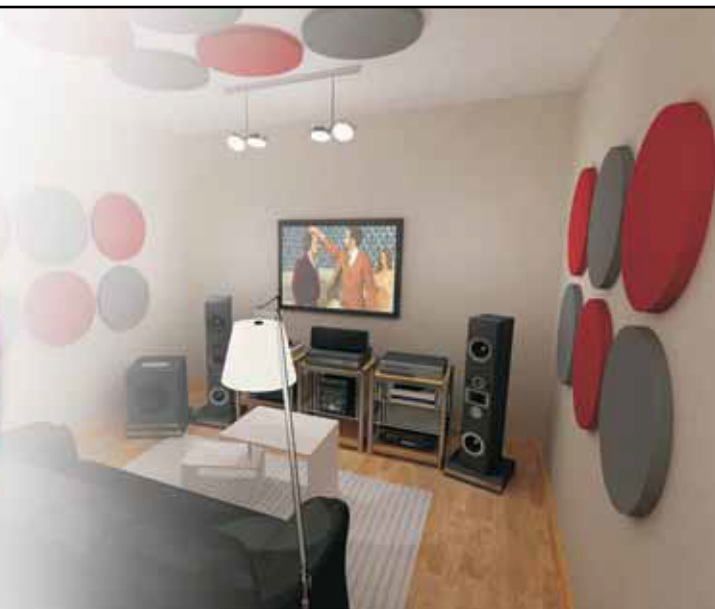


Image of 60x60cm pair models Ref.:COK060 (on the left) and the same applied (ambient image).

DESCRIPTION

COOKIE® is made of a flexible open-cell regular foam or melamine foam which are excellent sound absorption materials. The optional velvet finishing gives this product an attractive luxury look. Its appearance describes a simple concave and convex circular shape and is always supplied in pairs.

COOKIE®'s acoustic characteristics make this product ideal for use as noise control device in buildings. It improves airborne noise reduction also providing fire safety and environmental requirements.

Due to its low weight, COOKIE® allows the creation of large-surface areas that can be glued or hanging, giving rooms an attractive appearance.

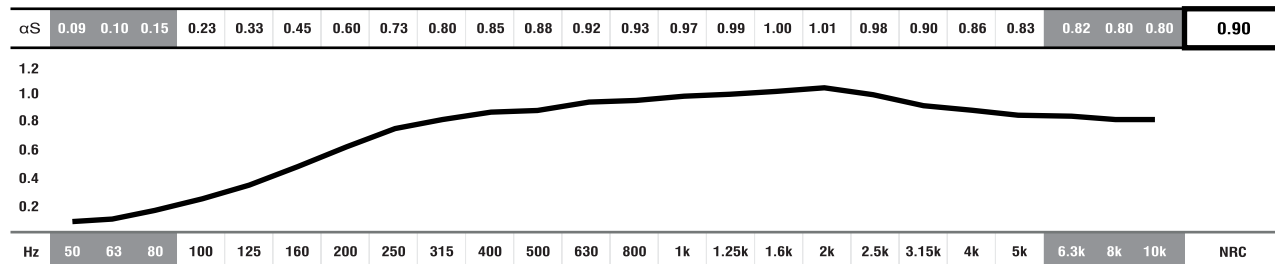
Meeting rooms, offices and hotel foyers can be acoustically upgraded just as effective and attractive by using this product. The installation method is very simple by using mounting glue.

The raw material of this product meets the most important international fire safety regulation. It is produced without using halogenated hydrocarbons, flame-retardants and/or toxic heavy metals.

FEATURES

- NRC: **0.90/m²** [$>250\text{Hz}$; $<10\text{KHz}$].
- Raw material: melamine resin or standard acoustic foam.
- **MELAMINE FOAM** - Flame resistance: Germany B1, France M1, GB Class1, USA V0/HF1.
- **ACOUSTIC FOAM** - Self-extinguishable M1 fire-retardant foam.
- Good thermal insulation properties and constant physical properties over a wide temperature range.
- Resistance to all organic solvents.
- Package: 8 units (4 pairs).
- Mounting: glue or by hanging.
- Sold in pairs.

ABSORPTION COEFFICIENT*



■ ABSORPTION COEFFICIENT: Values in accordance with the standards: EN 20654, ASTM C423 and EN 11654.

■ Values [$<100\text{Hz}$ and $>5\text{K}$] are Non Standard Values.

*PANEL DATA ONLY OF REF.: COK060 VELVETY FINISHING.

REGULAR FOAM COLOURS



CREAM
Regular Foam
FR 25



GREY
Regular Foam
FR 25

VELVETY COLOURS



RED



BLUE



GREY



BEIGE



BLACK



WHITE

IMPORTANT NOTICES

- Colour examples shown are only for reference. JOCAVI® cannot guarantee that the colours represented will exactly match the colours of the products shipped, due to the variances among different monitors and printers. Some colour variation may occur between production runs of Acoustic Foam products. Colour consistency in similar products is not guaranteed, some nuances can happen. Colour fading will occur with UV exposition over time.
- JOCAVI® products are fire retardant and/or self extinguishing to varying extents. Before purchasing any of our acoustic foam products, please check with your local fire marshal or building inspector for approval. We cannot guarantee that any product meets the specific building code regulations in your area/country as regulations widely vary from place to place. JOCAVI® will not be held liable for property damage or injuries caused by the misuse of our products.
- Typical Indoor Comfort Standards state a temperature range of 20°C - 27°C (68°F - 81°F), and a relative humidity of less than 60%. These would be considered as normal operational levels of JOCAVI® products' range.
- Despite all the standard sizes of all products, several of our models can be customized upon previous consultation to info@jocavi.net. • Sizes may slightly vary due to their production method and some inherent raw-materials characteristics.
- Specifications can be modified without prior notice, if technical or commercial reasons so require.