



trivum RP341

BNF 1SP Article-Number: 300016 EAN: 4260393850170

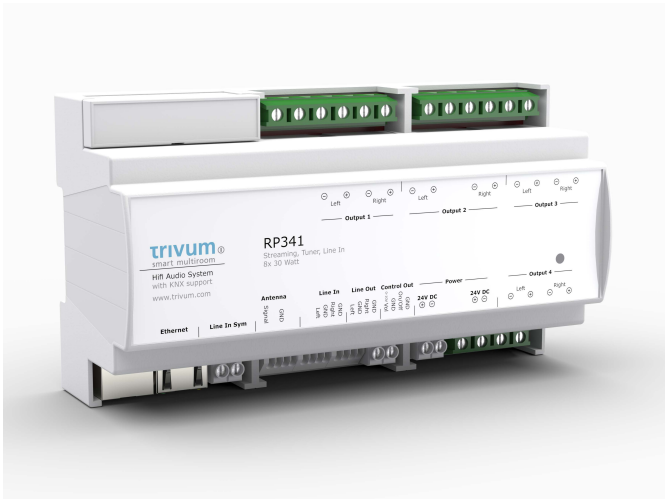
trivum REG audio actuators are flexible music systems for DIN rail mounting. All models can be combined with one another and are already ready a few minutes after installation.

Various music streaming services* as well as AirPlay can serve as music sources. Furthermore, audio files can be played from a NAS. All REG audio actuators support for this various audio formats with a sampling rate up to 96 kHz.

By trivum RP341 up to 4 stereo zone can be operated. The integrated amplifier has an output power of 8x 30 watt by 4 ohms. The RP341 has an additional antenna connection for FM reception and two Line-In inputs (balanced and unbalanced) for external audio sources. A Line-Out output and the volume control interface allow the expansion of the audio multiroom system by further trivum components.

It is controlled by other components of trivum CONTROL series, a web browser or via KNX.

* Requires a paid subscription of the service provider.



Easy configuration

The configuration can be made via any browser-enabled end device – without any installation or further software.



Easy configuration

A built-in web server enables easy configuration from every PC/Mac without any additional software to be installed.



Streaming

The built-in streaming client allows you to play internet radio and music streams, as well as your own music collection via AirPlay and NAS.



Formats

The REG devices support the most popular audio formats like MP3, AAC, ALAC, Flac, and WMA.



Amplifier

A digital amplifier with closed loop technology and a high efficiency of >90% provides sufficient power and yet remains cool.



Powerful sound and individual adjustment

A simple adjustment for bass and treble offers plenty of range for your personal taste. A professional equalizer is at your disposal for more extensive sound improvements.



KNX

All REG models can be completely integrated into a KNX installation via KNX/IP router. Both control commands and status messages can be transmitted/received.



Visualization

Integration in the visualization of Jung FAP, Hager Domovea and Gira HomeServer.



One analog input

This allows you to connect an external audio source. Thus, for example, the sound from the TV can be played in each zone.



FM radio

With the integrated FM RDS tuner, the local radio station can be received.





Function

Hi-fi system for DIN rail mounting with built-in amplifier for playback of streaming sources, FM radio and an analog audio source in up to four zones.

Case

Material	ABS plastic
Color	grey
Width	9 TE (159 mm)
Total weight	300 g
Mounting	DIN rail

Playback

Streaming	NAS, Tuneln, AirPlay, internet streaming services ¹
Radio	FM tuner (x1)
External sources	analog (x1)
Audio files	MP3, AAC, ALAC, Flac, WMA
Sample rate	up to 96 kHz

Connections

Ethernet	RJ-45 (x1)
Radio	2-pin terminal block (x1)
Line-In (analog) (unbalanced)	4-pin terminal block (x1)
Line-In (analog) (balanced)	RJ-45 (x1)
Line-Out (analog)	4-pin terminal block (x1)
Volume Control	4-pin terminal block (x1)
Speaker	4-pin terminal block (x1)

Amplifier

Typ	Class D
Music power (total)	240 W @ 4 Ω
Music power (per channel)	30 W @ 4 Ω (x8)
Impedance	4–8 Ω
Operating temperature	-20...+50 °C

Power supply

Input voltage	24 V DC
Input current	8 A
Max. power consumption	192 W
Stand-by power	< 4.5 W
Power supply	not included in the scope of delivery
Connector	2-pin terminal block (x2)

Controls

trivum iPhone App, trivum TouchPad, KNX, web browser

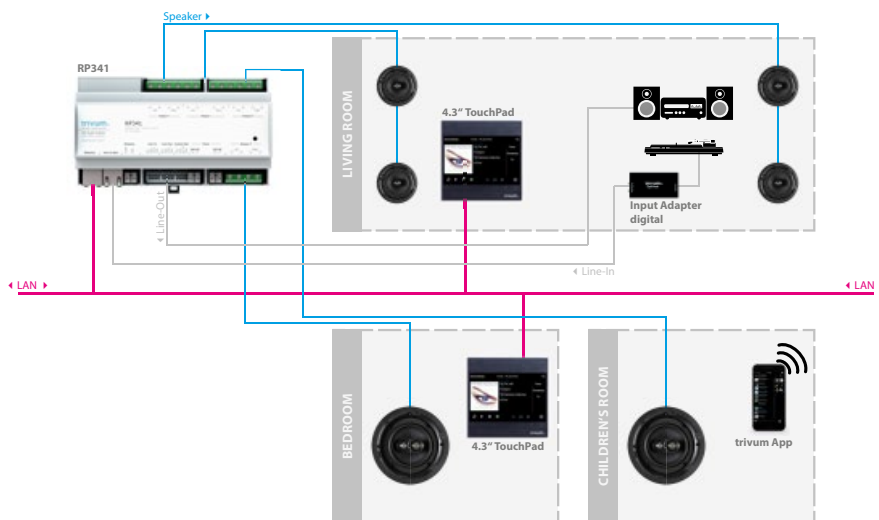
Configuration

Tool	web browser Safari, Firefox, Chrome
Sound control	balance, treble, bass, 5-band-EQ (fully parametric)

KNX²

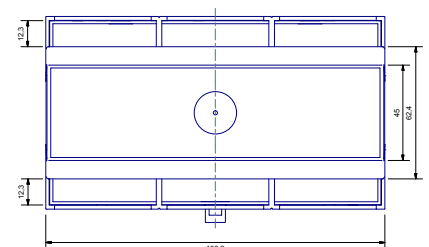
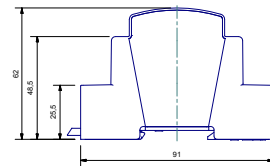
Functions	zone status, source, volume, text information, source control, actions
Visualization	Support for Gira HomeServer, Hager Domovea, Jung FAP
Connection	via KNX/IP router

Connection example



Dimensions

All measurements are given in millimeter (mm).



¹ please find our current list of supported online music services on www.trivum.de

² KNX is not required to use the main functions of the RP341.

